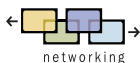


LP[®]790

**PROJECTORNET™ READY****ProjectorNet**

Built-in networking for projector control and administration in an intuitive tool that gives you the power to remotely monitor and manage projectors for improved reliability, increased security and reduced total cost of ownership

COMPACT DESIGN

Just over 13 pounds, with efficient, unobtrusive styling for dedicated installations

WHISPER-QUIET PERFORMANCE

3300 max ANSI lumens at less than 38dB for distraction-free presentations

EXTENSIVE CONNECTIVITY

Accepts virtually any source—VCR, DVD, PC/Mac, LAN, and DVI



InFocus® LP790



THE COMPLETE TECHNOLOGY SOLUTION

The InFocus® LP790 is the IT solution for rooms that need a standalone or network-ready projector that's easy to install, set up, and connect for powerful projection on demand. Ideal for large rooms, classrooms, training centers, hotel meeting rooms and conference venues. Sturdy and compact—nearly half the size of competitive projectors with the same features—the LP790 is an essential part of your corporate projector lineup, event rental or institutional resource pool.

PACKED WITH FEATURES

At last, simplicity doesn't come with a trade-off. Input source flexibility, 3300 max ANSI lumens, network-readiness, and native XGA resolution—without the barriers of complicated set up. The LP790 is one of the only projectors to support HDCP and digital video through DVI for the best image quality. RS-232 provides seamless compatibility with control systems such as AMX and Crestron, and the LP790 has USB and PS/2 for mouse control. The LP790 will project incredible

images every time with 950:1 contrast ratio, DVI connectivity for translation-free digital projection and an advanced DVDO processor for amazingly smooth video. Less than 38dB of audible noise ensures distraction-free meeting rooms. This projector is simply the easiest way to bring feature-packed, high-quality projection to users with a variety of applications.

INFOCUS QUALITY VIDEO

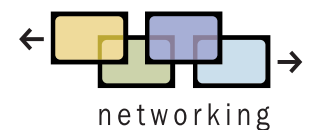
An advanced DVDO processor for line doubling and smooth images gives the audience a cinema-quality experience when viewing video. From both the data and video sources, the rich color saturation, brightness (3300 max ANSI lumens) and high contrast ratio (950:1) deliver an exceptionally stunning display for any large-room application. The Digital Visual Interface (DVI) provides loss-free connections for rich images in a large format.

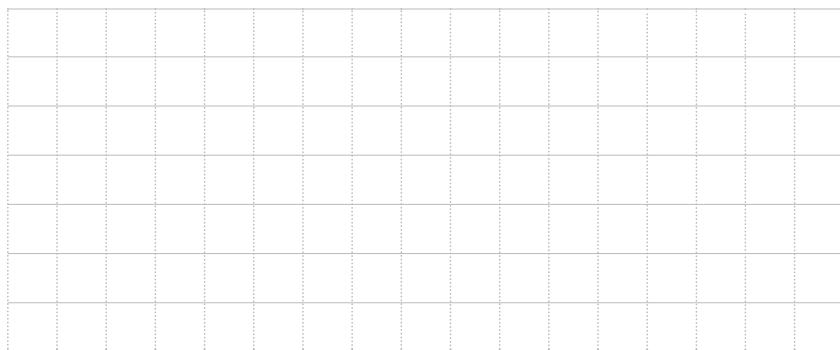
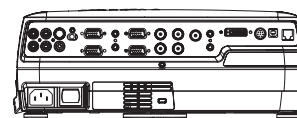
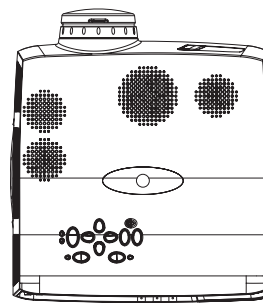
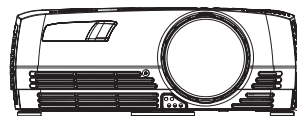
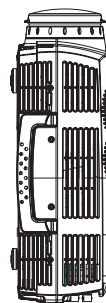
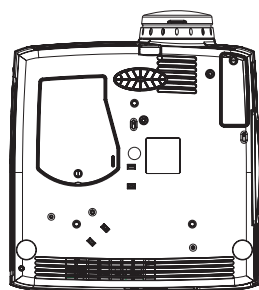
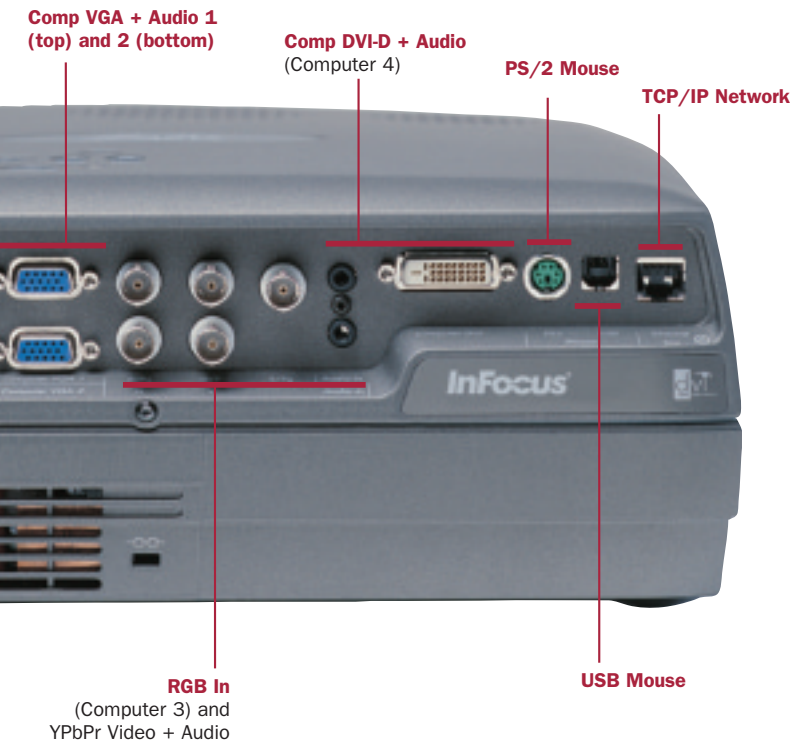


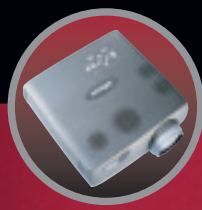
CONNECT, MANAGE AND CONTROL OVER YOUR NETWORK

With InFocus ProjectorNet™ software, IT managers can command and control the LP790 over their existing networks. Designed as a snap-in to the Microsoft® Management Console—InFocus ProjectorNet provides unique control features. Ideal to reduce time spent needed to manage multiple projectors and reduce total cost of ownership (TCO).

Projector Management ProjectorNet







LP790®

INFOCUS QUALITY VIDEO

The advanced video processor converts existing standard definition video from DVD, videotape, laser disc, satellite or standard broadcast television to a near high-definition signal, dramatically improving the video image.

Video Processing

- Motion-adaptive video deinterlacing
- Source adaptive processing
- Film mode detection with 3:2 and 2:2 pull-down
- Source Transition Management provides seamless transitions between source types
- Auto-dynamic thresholds enable reliable 3:2 pull-down and 2:2 pull-down detections even with noisy sources
- Motion detection on per-pixel basis
- Four input fields used to determine contents of each output frame
- Cubic interpolation for pixel calculations
- Diagonal processing reduces artifacts and distortion
- Low-noise, high-accuracy 10-bit video DACs

SERVICE YOU CAN COUNT ON

InFocus Corporation is the worldwide leader in digital projection. Our dedication to quality and customer satisfaction is reflected in service options that will bring you a greater return on your investment. Most InFocus Corporation projectors come with a standard two-year limited factory warranty, including parts and labor and a 90-day lamp replacement. Our customer support offers you unparalleled service and convenience, whatever your needs.

For service program details in your region, please visit:

www.infocus.com/service/service_offerings

Ships Standard With:

- **Wired/wireless remote control with mouse control and laser pointer**
- **AC power cord (US or European)**
- **PS/2 mouse control cable**
- **USB cable**
- **VGA cable**
- **Standard video cable**
- **Multiple language user guide**
- **Quick Start Card**
- **CD**

ORDERING INFORMATION

Model Number

LP790 For worldwide use

Optional Accessories

- Samsonite® Deluxe Travel Case (CASE-801)
- ATA Shipping Case (CA-ATA-008)
- Digital/Analog Interface Card (SP-DVI-CARD)
- Ceiling Mount Kit (SP-CEIL-001)
- PC Guardian® Projector Cable Lock (SP-LOCK)
- 20m wired remote cable (301145)
- Mind Path® PocketPoint RF Remote (HW-RF-POCKETPNT)
- 50-inch Portable Projection Screen (A650)
- 60-inch Deluxe Insta-Theatre Screen (HW-DLXSCRN)
- 84-inch Wall/Ceiling Mountable Screen (HW-WALLSCR84)
- Replacement Lamp – 1,500 hours (SP-LAMP-008)
- 50ft VGA Extension Bundle (SP-VGAEXT-D or SP-VGAEXT-I)
- ProjectorNet Software 5-Seat CD package (SW-PN-5UD)
- ProjectorNet network adapter and cable bundle (HW-PN-AC1)

To learn more about ProjectorNet™ please visit www.infocus.com/projectornet

TECHNICAL SPECIFICATIONS

Native Resolution	• XGA (1024 x 768)
Display Technology	• polysilicon TFT x 3 with micro lens array
Input Sources	• Computer: HD15 x 2 (analog RGB), DVI-D, 5BNC (RGBHV, RGB, RGsB), audio x 4 (3.5 mm stereo mini jack) • Video: YPbPr and RGB Component Video (via 5BNC), S-Video, Composite Video, audio (RCA x 2)
Output Sources	• RGB (HD15), audio (RCA x 2)
Computer Compatibility	• SXGA+, SXGA, XGA, SVGA, VGA, Macintosh®
Video Compatibility	• HDTV (1080i, 720p), NTSC, NTSC 4.43, PAL, SECAM
Brightness	• 3300 max ANSI lumens
Brightness Uniformity	• 85%
Contrast Ratio	• 950:1 full on/full off
Number of Colors	• 16.7 million
H-Synch Range	• 15 – 100 kHz
V-Synch Range	• 43.5 – 130 Hz
Dot Clock	• 12 – 165 MHz
Digital Keystone Correction	• +/- 15°
Projection Lens	• f = 47 – 61 mm
Throw Ratio	• 1.75 – 2.24:1
Minimum	
Projection Distance	• 1.1 m
Aspect Ratio	• 4:3 native; 5:4, 16:9 supported
Image Size (diagonal)	• 30" – 300" (762 mm – 7620 mm)
Projection Methods	• Front/rear, ceiling/desktop
Audio	• 2 x 2.5 Watt stereo with 20 Watt subwoofer
Control	• USB mouse, PS/2 mouse, RS-232
Communication	• Onboard TCP/IP networking for projector control
Lamp	• 250-Watt UHP, 1500 hours
Dimensions	• 12.7" (W) x 5.1" (H) x 13.9" (L) 322 mm (W) x 130 mm (H) x 352 mm (L)
Weight	• 13.2 lbs /6.0 kg
Power Consumption	• 400 Watts
Power Supply	• 100V – 240V at 50 – 60 Hz
Operating Temperature	• 5° – 35° C at sea level (0 – 10,000'); 41° – 95° F
Menu Languages	• English, German, French, Spanish, Italian, Norwegian, Portuguese, Japanese, Chinese
Audible Noise	• Less than 38dB
Approvals	• UL, cUL, CE, FCC Class A,TUV, C-tick, NOM, IRAM
Lamp Warranty	• 90 days or 500 hours, whichever comes first
Warranty	• Two years parts and labor

PROJECTION DISTANCES

Distance	Minimum Image				Maximum Image				
	Diagonal Image	Image Width	Diagonal Image	Image Width	Diagonal Image	Image Width	Diagonal Image	Image Width	
3.6'	1.1 m	2'	0.61 m	1.6'	0.49 m	2.57'	0.78 m	2.06'	0.63 m
5'	1.5 m	2.79'	0.85 m	2.23'	0.68 m	3.57'	1.09 m	2.86'	0.87 m
10'	3.0 m	5.58'	1.70 m	4.46'	1.36 m	7.14'	2.18 m	5.71'	1.74 m
15'	4.6 m	8.37'	2.55 m	6.70'	2.04 m	10.71'	3.27 m	8.57'	2.61 m
20'	6.1 m	11.16'	3.40 m	8.93'	2.72 m	14.29'	4.35 m	11.43'	3.48 m
25'	7.6 m	13.95'	4.25 m	11.16'	3.40 m	17.86'	5.44 m	14.29'	4.35 m
30'	9.1 m	16.74'	5.10 m	13.39'	4.08 m	21.43'	6.53 m	17.14'	5.23 m
35'	10.7 m	19.53'	5.95 m	15.63'	4.76 m	25.00'	7.62 m	20.00'	6.10 m

www.infocus.com

InFocus Corporate Headquarters:

27700B SW Parkway Avenue • Wilsonville, Oregon 97070-9215, USA
Phone: 503-685-8888 • 1-800-294-6400 • Fax: 503-685-8887

In Europe: InFocus International BV

Strawinskylaan 585 • 1077 XX Amsterdam • The Netherlands
Phone: (31) 20 5792000 • Fax: (31) 20 5792999
Freephone: 008000 4636287 (008000 INFOCUS)

In Asia: 238A Thomson Road • #18-01/04 Novena Square

Singapore 307684 • Telephone: (65) 6334-9005 • Fax: (65) 6333-4525

InFocus® and LP® are registered trademarks of InFocus Corporation. All other trademarks are used with permission or are for identification purposes only and are the property of their respective companies. ©2002 InFocus Corporation. All rights reserved. 11/02 805-0491-02 LP790_DS_E.qxd