

a whole new  
**perspective**  
on television.




the look.



AQUOS™





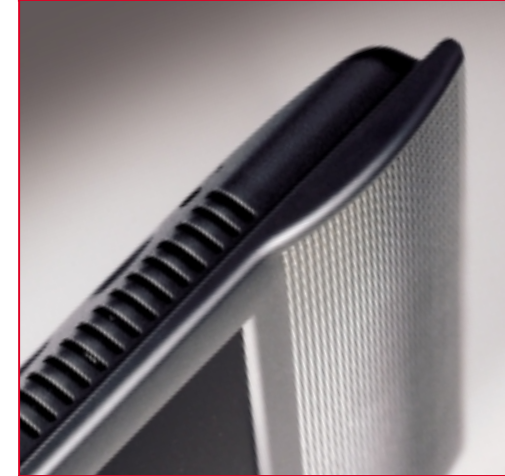
Sharp didn't merely begin at the LCD drawing board. We *created* the drawing board. And with **AQUOS™**, we have truly perfected Liquid Crystal Television. Rest assured, you've never seen anything like it. From the inviting, sleek, contemporary design...to the startling clarity of the revolutionary LCD panel, **AQUOS** was designed to enhance every aspect of your television experience.

**bright ideas.**

Besides taking television to a new level of performance, AQUOS brings unprecedented *practicality* as well. Three models—13-inch, 15-inch and 20-inch—allow you to bring amazing television into every corner of your home.

**brilliant images.**

The picture quality of AQUOS televisions is simply exceptional. Several innovations and proprietary Sharp technologies make it so. The ASV (Advanced Super View) high-performance TFT-LCD panel delivers a high level of brightness, vivid colors and a high contrast ratio. Our "Black TFT" technology is a low-reflection coating that reduces glare and allows a bright picture even in strong lighting conditions. In fact, everything you watch will look its absolute best—as all AQUOS models offer component video, S-video, composite video and RF antenna inputs. And that's just the beginning.



**E**ach **AQUOS** model is truly a work of art from the inside out. They are perhaps the world's first televisions that are as much a design element for your home as they are an entertainment device. And that's no accident. Sharp engineers worked closely with designers to ensure that every detail is a mix of elegance and function.

- The built-in handle conveniently doubles as a tabletop stand.
- Less than three inches thin, the **AQUOS** barely protrudes from your wall when hung with optional mounting hardware.
- The unique LCD panel creates an enormous viewing angle—170° x 170°—making images crystal clear from almost anywhere in the room.
- Stereo speakers are beautifully integrated into the design—filling your room with sound... without interrupting the flow of your décor.

the **feel.**





L I Q U I D   C R Y S T A L   T E L E V I S I O N









There are no limits to where AQUOS televisions can enhance your life... and your lifestyle. Create powerful impact without having to dominate the room. From 13-inch to 15-inch to 20-inch, there's an AQUOS to add vision, sound and style to every room in your home. Use the included tabletop stand or choose wall or under-counter mounting options\*. Then sit back and watch AQUOS perform in ways...and places...that are only beginning to be explored.

\*Available for 13" and 15" models.

# N

the freedom.

Not just a breakthrough in *how well* television performs, **AQUOS** changes *where* and *when* television performs. The innovative design means **AQUOS** goes wherever you want it, even in places where television viewing has been impractical or impossible. Mount it on a wall. Tuck it away on a bookshelf in the den. Take advantage of an optional mount\* for under a kitchen cabinet. Cabin fever? Pick up your **AQUOS** by the convenient carry handle (they weigh as little as 9.5 pounds) and take refuge on the deck or patio. You'll be blown away by the brightness and clarity of the picture, even in outdoor light. Now, even in confined places, **AQUOS** opens up a world of possibilities you never dreamed possible.



## FEATURES

- Advanced Super View (ASV) High-Performance TFT-LCD Panel
- Black TFT Anti-Glare Coating
- 500:1 Contrast Ratio
- 170°/170° Viewing Angles
- 60,000-hour Lamp Life
- High Brightness (430 cd/m<sup>2</sup>)
- Built-in TV Tuner
- Slim and Stylish Design
- Integrated Carry Handle/Table Stand
- VESA 100mm Standard Mounting Pattern
- Component Video Input
- Low Power Consumption

### INCLUDED ACCESSORIES

- Remote control — IR, 28-key
- Batteries for R/C — Size AAA x 2
- Carry handle/table stand
- AC power — AC adapter, AC cord
- Cable cluster holders — 2 clamps
- Antenna cable
- Operation manual — Language: English/French/Spanish

### OPTIONAL ACCESSORIES

- Wall-mount brackets
- Undercabinet mount bracket (13"/15" only)

All trademarks and registered trademarks are the property of their respective owners. All screen images are simulated. TV screen sizes are measured diagonally. The LC-13B2UA, LC-15B2UA and LC-20B2UA are backed by a 1-year parts and labor warranty.

**SHARP** | be sharp™

Sharp Electronics Corporation • Consumer Electronics Group  
 Sharp Plaza, Mahwah, NJ 07430-2135 conlcd@sharpsec.com  
 Call us toll free at 1-877-388-SHARP www.sharppusa.com  
 ©2001 Sharp Electronics Corporation Printed in USA  
 SV-06-400 12/01

## SPECIFICATIONS

| ITEM                  |                             | LC-13B2UA/15B2UA  | LC-20B2UA   |
|-----------------------|-----------------------------|---|---|
| SCREEN SIZE           |                             | 13" (diagonally) / 15" (diagonally)   | 20" (diagonally)  |
| LCD SYSTEM            | Type                        | Active matrix (a-si TFT), 921,600 dots (VGA:H640xV480xRGB3)   | Active matrix (a-si TFT), 921,600 dots (VGA:H640xV480xRGB3)     |
|                       | Panel                       | Advanced Super View (ASV)   | Advanced Super View (ASV)                                       |
|                       | Anti-glare                  | Black TFT coating   | Black TFT coating   |
|                       | Back light type             | Edge-Light system, CFL x 4 pcs.   | Direct-Light system, CFL x 10 pcs.                              |
|                       | Lamp life of back light     | 60,000 hours  | 60,000 hours  |
| VIDEO                 | Color system compatibility  | NTSC-3.58/4.43, PAL/PAL-M/N/60, SECAM video system  | NTSC-3.58/4.43, PAL/PAL-M/N/60, SECAM video system              |
|                       | TV tuner compatibility      | NTSC-M/PAL-M/N CCIR TV standard system  | NTSC-M/PAL-M/N CCIR TV standard system                          |
|                       | TV tuner type               | 181-channel Electronic PLL tuner  | 181-channel Electronic PLL tuner                                |
|                       | Brightness                  | 430 cd/m <sup>2</sup>   | 430 cd/m <sup>2</sup>   |
|                       | Contrast ratio              | 500:1   | 500:1   |
|                       | Viewing angles              | H:170° / V:170°   | H:170° / V:170°   |
|                       | Color temperature           | 8000° K   | 8000° K   |
|                       | Digital comb filter         | 4-line (NTSC/PAL)   | 3D Y/C (NTSC 3.58 only), 4-line (PAL/NTSC 4.43)                 |
| AUDIO                 | Speakers                    | 4 x 7 cm x 2 pcs.   | 10 x 5cm x 2 pcs.   |
|                       | MTS + SAP Multiple/Stereo   | Yes   | Yes   |
|                       | Output                      | 2.1 W + 2.1 W   | 2.5 W + 2.5 W   |
| REAR TERMINALS        | Inputs (Video)              | Component (Y/Pr/Pb) RCA x 1<br>S-Video x 1<br>Composite RCA x 2   | Component (Y/Pr/Pb) RCA x 1<br>S-Video x 1<br>Composite RCA x 2 |
|                       | Inputs (Audio)              | L/R RCA x 2   | L/R RCA x 2   |
|                       | Outputs (Video)             | Composite RCA x 1   | Composite RCA x 1   |
|                       | Outputs (Audio)             | L/R RCA x 1   | L/R RCA x 1   |
|                       | RF                          | ANT-IN terminal   | ANT-IN terminal   |
|                       | Headphone jack              | 3.5mm mini-jack output  | 3.5mm mini-jack output  |
|                       | Power                       | 12V DC input terminal   | 13V DC input terminal   |
| CONVENIENCE           | OSD Languages               | English/French/Spanish  | English/French/Spanish  |
|                       | Mounting Pattern            | VESA 100mm  | VESA 100mm  |
|                       | Image Inverter              | Yes   | Yes   |
|                       | Brightness                  | Three selections; Normal/Bright/Dark  | Three selections; Normal/Bright/Dark                            |
|                       | Closed Caption/V-Chip       | Yes   | Yes   |
|                       | Sleep Timer                 | Yes   | Yes   |
|                       | Auto Power Off              | Yes   | Yes   |
|                       | Blue Background             | Yes   | Yes   |
|                       | EZ Setup/Auto Search Tuning | Yes   | Yes   |
| POWER                 | Source                      | AC 110-240V / 50-60 Hz (with AC Adapter), DC 12V  | AC 110-240V / 50-60 Hz (with AC Adapter), DC 13V                |
|                       | Consumption                 | AC 41W (0.5W standby), DC 35W   | AC 65W (0.5W standby), DC 56W                                   |
|                       | Supply cord                 | 1.8M polarity 2-wire rectangle 2-pin type (AC 120V)   | 1.8M polarity 2-wire rectangle 2-pin type (AC 120V)             |
| DIMENSIONS/<br>WEIGHT | With stand                  | <b>LC-13B2UA</b><br>16 57/64" (W) x 13 5/16" (H) x 7" (D) / 9.5 lbs.<br><b>LC-15B2UA</b><br>19 1/16" (W) x 15 1/32" (H) x 7 51/64" (D) / 11.5 lbs.      | 24 51/64" (W) x 18 41/64" (H) x 9 1/32" (D) / 18.5 lbs.         |
|                       | Without stand               | <b>LC-13B2UA</b><br>16 57/64" (W) x 10 11/16" (H) x 2 3/8" (D) / 7.9 lbs.<br><b>LC-15B2UA</b><br>19 1/16" (W) x 11 59/64" (H) x 2 13/32" (D) / 9.5 lbs. | 24 51/64" (W) x 15 1/64" (H) x 2 55/64" (D) / 16.1 lbs.         |

Design and specifications are subject to change without notice.

